
Autotech Controls

1855D Remote Display

Instruction & Operation Manual



AVG Automation
Autotech Controls
343 St. Paul Boulevard
Carol Stream, IL 60188

Telephone: 630-668-3900
800-TEC-ENGR

FAX: 630-668-4676

Remote Display

Model 1855D

- BCD to seven segment slave display
- 5 digits, .56 inches high, bright LED display
- Plug-in MS connector for quick wiring
- Rugged metal enclosure
- Provides 5 or 12 VDC power for PLC output card
- 100% solid-state construction



The 1855D

The 1855D display module accepts 5 digit BCD input and converts it to a seven segment bright LED display for remote readout. It operates at 120 VAC line input power and an internal voltage regulator provides 5 or 12 VDC @ 750 mA output to the external devices. The digital input connections are made through an MS connector for quick installation

How to Order

SAC-1855D-00x 5 digit BCD display with built-in power supply

DC Power Output
 2: 12 VDC regulated @ 750 mA
 5: 5 VDC regulated @ 750 mA

Specifications

Input Power: 120 VAC, 60 Hz

Digital Input Format: 20 – line BCD (bits 1, 2, 4, 8, 10, 20, 40, 80, 100, 200, 400, 800, 1K, 2K, 4K, 8K, 10K, 20K, 40K, 80K)

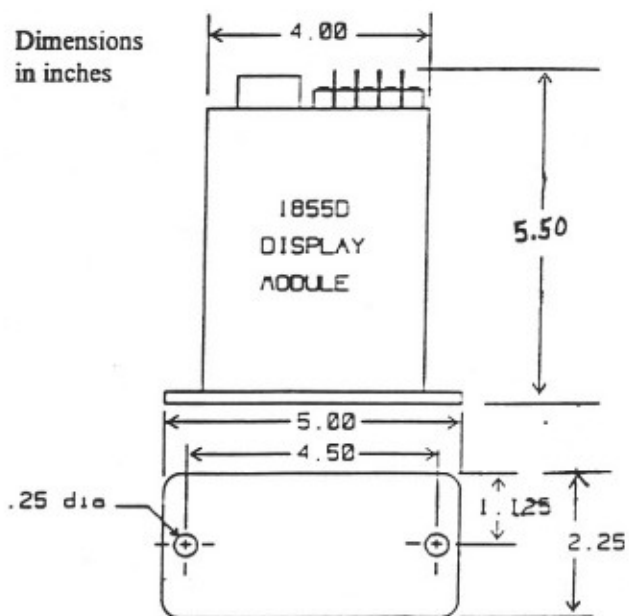
Input Logic Level:

	5VDC	12VDC
Logic True	4 to 5V	9 to 12V
Logic False	0 to 1V	0 to 2V

Internal 4.7K pull-up resistors provided.

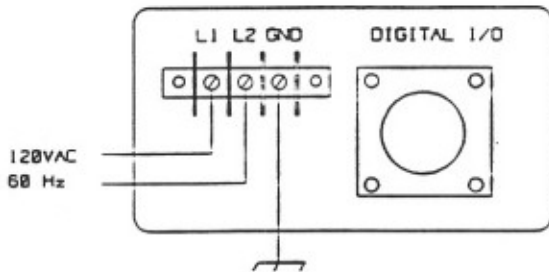
Operating Temperature: -10 to +135° F
 (-23 to 55° C)

Mounting



Wiring

Shielded cable like Autotech's CBL-29S22-MXXX should be used to connect 1855D to the PC or controller supplying BCD to the display. The shield is not terminated at 1855D and should be connected to either: 1) signal ref. (terminal 30 if using Autotech's transition connector CBL-E34MF-TXXX) or, 2) earth ground at the PC or controller driving the 1855D. The effectiveness of each method depends upon the RF potential of different grounds in the system. Autotech recommends trying number 1) first.



Rear View and Input Power Wiring

Digital I/O Wiring			
1855D pin # MS3112E-18-30P	TERM #*	CBL-29S22-MXXX Wire Color	FUNCTION
A	1	Brown	1 Bit
B	2	Red	2 Bit
C	3	Orange	4 Bit
D	4	Yellow	8 Bit
E	5	Green	10 Bit
F	6	Blue	20 Bit
G	7	Purple	40 Bit
H	8	Gray	80 Bit
J	9	White	100 Bit
K	10	Black	200 Bit
L	11	White/Brown	400 Bit
M	12	White/Red	800 Bit
N	13	White/Orange	1K Bit
P	14	White/Yellow	2K Bit
R	15	White/Green	4K Bit
S	16	White/Blue	8K Bit
T	17	White/Purple	10K Bit
U	18	White/Gray	20K Bit
V	19	White/Black/Gray	40K Bit
W	20	White/Black	80K Bit
X		White/Black/Brown	NC
Y		White/Black/Red	NC
Z		White/Black/Orange	NC
a		White/Black/Yellow	NC
b	30	Black/12Ga	Sig Ref
c**		White/12Ga	+5 V out
d		White/Black/Green	NC
e		White/Black/Blue	NC
f		White/Black/Purple	NC
g		Shield is connected to g on mating connector (MS3226F-18-30S)	NC

* Autotech 1855 Bus pin number or transition conn. CBL-E34MF-Txxx term. number

** Disconnect Pin "c" on 1855D when interfacing 1855D to any of Autotech's 1855 series source modules.

WARRANTY

Autotech Controls warrant their products to be free from defects in materials or workmanship for a period of one year from the date of shipment, provided the products have been installed and used under proper conditions. The defective products must be returned to the factory freight prepaid and must be accompanied by a Return Material Authorization (RMA) number. The Company's liability under this limited warranty shall extend only to the repair or replacement of a defective product, at The Company's option. The Company disclaims all liability for any affirmation, promise or representation with respect to the products.

The customer agrees to hold Autotech Controls harmless from, defend, and indemnify Autotech Controls against damages, claims, and expenses arising out of subsequent sales of Autotech Controls' products or products containing components manufactured by Autotech Controls and based upon personal injuries, deaths, property damage, lost profits, and other matters which Buyer, its employees, or subcontractors are or may be to any extent liable, including without limitation penalties imposed by the Consumer Product Safety Act (P.L. 92-573) and liability imposed upon any person pursuant to the Magnuson-Moss Warranty Act (P.L. 93-637), as now in effect or as amended hereafter.

No warranties expressed or implied are created with respect to The Company's products except those expressly contained herein. The customer acknowledges the disclaimers and limitations contained and relies on no other warranties or affirmations.

CAUTION

Autotech Controls' products are carefully engineered and rigorously tested to provide many years of reliable operation. However, any solid-state device may fail or malfunction sometime. The user must ensure that his system design has built-in redundancies if Autotech Controls' product is being used in applications where a failure or malfunction of the unit may directly threaten life or cause human injury. The system should be so designed that a single failure or malfunction does not create an unsafe condition. Regularly scheduled inspections, at least once a week, should be made to verify that the redundant circuits are fully functional. All faults should be immediately corrected by repair or replacement of the faulty unit. In addition, the user may have to comply with OSHA, ANSI, state or local standards of safety. The user of Autotech Controls' products assumes all risks of such use and indemnifies Autotech Controls against any damages.

The information in this book has been carefully checked and is believed to be accurate; however, no responsibility is assumed for inaccuracies. Autotech Controls reserves the right to make changes without further notice to any products herein to improve reliability, function or design. Autotech Controls does not assume any liability arising out of application or use of any product described herein.

Autotech Controls does not recommend the use of its products in applications wherein a failure or malfunction of the unit may directly threaten life or cause human injury. The user of Autotech Controls' products assumes all risks of such use and indemnifies Autotech Controls against all damages.

© Copyright 1997 by Autotech Controls, Limited Partnership. All rights reserved.